

MSA



Research

**DEFINITIVE INSURANCE INFORMATION
FOR INTELLIGENT BUSINESS DECISIONS™**

Q4

Summary Stats

Year-End 2019

Life/Health/Fraternal Results

www.msaresearch.com

Summarized Year-End 2019 Canadian Life/Health/Fraternal Insurance Results

Dollar amounts in thousands of Canadian Dollars.

Released March 23, 2020

For extremely detailed year-end 2019 financial data on these companies please refer to the MSA Researcher Life/Health Software Platform by logging in at www.msaresearch.com

MSA Code	Company	Group	Net Premiums	YoY% Change	Total Revenue	YoY% Change	Benefits and Expenses	YoY% Change	Net Income	YoY% Change	Comprehensive Income	YoY% Change	LICAT or LIMAT Ratio
FLC001	ACTRA Fraternal Benefit Society		17,252	7%	29,765	20%	26,498	11%	3,267	225%	1,868	223%	157.52
LHB002	Aetna Life Insurance Company		17,477	20%	20,010	19%	16,568	41%	2,877	-32%	3,772	19%	8.93
LHB039	Allianz Life Insurance Company of North America		129	-15%	712	-4%	160	-95%	431	126%	765	145%	7.41
LHC002	Allstate Life Insurance Company of Canada	Allstate	0		42	0%	52	16%	-10	-233%	19	171%	
LHB004	American Bankers Life Assurance Company of Florida		107,155	19%	115,794	25%	99,142	27%	12,665	16%	12,665	16%	6.79
LHB006	American Health and Life Insurance Company		19,025	5%	20,111	5%	13,510	-1%	5,768	37%	6,295	70%	25.13
LHB005	American Income Life Insurance Company		143,003	7%	161,213	7%	118,149	20%	43,024	-17%	77,921	118%	58.98
LHC055	Assurant Life of Canada		278,437	0%	480,480	70%	462,712	73%	12,975	19%	12,975	19%	157.86
LHB094	AWP Health & Life SA		135		278		560		-211		-198		0.09
LHB015	AXA Equitable Life Insurance Company		5,762	13%	7,738	6%	3,907	59%	3,818	-3%	5,135	46%	68.06
LHC004	Blue Cross Life Insurance Company of Canada		358,002	8%	414,614	18%	404,643	19%	8,128	-10%	12,574	255%	130.12
LHC003	BMO - BMO Life Assurance Company	BMO	1,117,811	-6%	2,479,720	109%	2,278,240	120%	157,142	24%	161,893	49%	124.08
LHC005	BMO - BMO Life Insurance Company	BMO	1,134,645	-6%	2,497,679	107%	2,285,987	119%	164,593	22%	169,479	45%	122.87
LHB090	British Insurance Company of Cayman		45,076	-1%	64,103	2%	29,983	29%	26,291	-15%	25,595	-19%	79.07
LHC073	Brookfield Annuity Company		431,541	107%	507,567	142%	499,740	139%	7,615	1367%	8,107	2006%	164.15
LHC008	Canada Life - Canada Life Assurance Company (The)	Canada Life	7,505,641	-17%	15,763,657	36%	14,063,671	44%	1,709,258	-4%	1,474,377	-26%	136.56
LHC007	Canada Life - Canada Life Insurance Company of Canada (The)	Canada Life	2,030,651	-1%	3,056,654	34%	3,040,994	37%	69,372	-47%	62,065	-25%	225.75
LHC020	Canada Life - Great-West Life Assurance Company (The)	Canada Life	34,796,109	9%	48,265,690	31%	45,455,093	35%	2,693,466	-10%	2,334,620	-29%	134.92
LHC024	Canada Life - London Life Insurance Company	Canada Life	20,650,954	25%	24,144,570	32%	23,728,838	35%	357,132	-38%	345,716	-48%	129.56
LHC010	Canadian Premier Life Insurance Company	Securian	159,229	51%	172,141	54%	169,814	58%	1,655	-53%	2,745	1%	142.82
LHP005	Capitale assureur de l'administration publique Inc. (La)	Capitale Grp	2,717,885	20%	3,417,733	45%	3,272,314	45%	109,906	62%	143,276	73%	
LHC001	Chubb Life Insurance Company of Canada	Chubb	57,543	5%	59,840	5%	41,670	-10%	13,299	75%	14,234	94%	132.28
LHC006	CIBC Life Insurance Company Limited		32,517	-9%	35,134	-7%	22,259	-21%	9,099	37%	10,986	93%	653.64
LHC022	CIGNA Life Insurance Company of Canada		75,721	-19%	75,028	-30%	58,220	-35%	13,276	9%	13,673	21%	210.37
LHB011	Combined Insurance Company of America		289,057	72%	312,883	72%	265,339	47%	25,012	13547%	34,455	5517%	67.25
LHC012	CompCorp Life Insurance Company		0		0		71	6%	-71	-6%	-71	-6%	
LHB012	Connecticut General Life Insurance Company		1,308	-36%	898	-95%	10,809	62%	-7,123	-197%	-291	-110%	46.97
LHC013	Co-operators Life Insurance Company	Cooperators	895,506	0%	1,442,119	32%	1,336,163	46%	18,312	-87%	106,049	-13%	155.02
FLB003	Croatian Fraternal Union of America		280	-6%	703	0%	831	15%	-128	-482%	-128	-482%	55.09
LHC015	CUMIS Life Insurance Company	Cooperators	259,230	31%	310,802	48%	280,618	52%	21,916	19%	25,133	49%	176.04
LHP003	Desjardins Financial Security Life Assurance Company		4,695,336	0%	8,449,024	33%	7,534,539	38%	680,047	10%	888,445	77%	

Summarized Year-End 2019 Canadian Life/Health/Fraternal Insurance Results

Dollar amounts in thousands of Canadian Dollars.

Released March 23, 2020

For extremely detailed year-end 2019 financial data on these companies please refer to the MSA Researcher Life/Health Software Platform by logging in at www.msaresearch.com

MSA Code	Company	Group	Net Premiums	YoY% Change	Total Revenue	YoY% Change	Benefits and Expenses	YoY% Change	Net Income	YoY% Change	Comprehensive Income	YoY% Change	LICAT or LIMAT Ratio
LHC016	Empire Life Insurance Company (The)	E-L Financial	909,841	4%	2,102,559	87%	1,849,634	97%	184,740	24%	239,344	107%	155
LHB016	Employers Reassurance Corporation		181,332	4%	207,882	5%	86,101	-82%	92,504	144%	105,141	148%	69.57
LHC017	Equitable Life Insurance Company of Canada (The)		1,027,823	15%	1,342,593	40%	1,206,687	43%	108,914	25%	120,200	41%	155.17
FLC007	FaithLife Financial		26,060	15%	54,893	76%	55,394	89%	-687	-140%	7	-98%	146.91
LHC038	Foresters Life Insurance Company	Foresters	159,751	16%	277,122	71%	286,657	43%	-7,778	76%	-5,676	82%	117.7
LHB010	General Re Life Corporation	BRKA	1,939	11%	2,257	15%	1,282	19%	975	9%	975	9%	0
LHB021	Gerber Life Insurance Company		2,775	-2%	4,321	-1%	9,394	200%	-4,517	-547%	-2,768	-1852%	187.64
FLC005	Grand Orange Lodge of British America (The)		1,412	8%	4,808	216%	4,245	221%	439	66%	277	234%	192.14
LHB091	Hannover Re (Ireland) DAC		8,005	1547%	9,259	514%	18,816	85%	-9,557	-10%	-8,337	5%	128.18
FLC006	Independent Order of Foresters (The)	Foresters	1,028,952	-12%	2,159,193	50%	2,034,415	30%	92,749	179%	67,580	786%	172.14
LHP001	Industrial Alliance Insurance and Financial Services Inc. (See Profile Notes)	IA	8,238,359	15%	14,378,830	59%	13,487,302	63%	713,144	13%	735,920	22%	
LHC031	ivari		444,730	11%	1,573,779	370%	1,329,385	227%	173,741	492%	252,618	450%	125.92
LHB031	Jackson National Life Insurance Company	Swiss Re	10	-50%	200	-4%	742	-4%	-542	3%	-486	13%	75.53
FLB004	Knights of Columbus		208,757	-1%	448,895	45%	570,493	70%	-121,598	-357%	-95,819	-92%	70.16
LHB027	Liberty Life Assurance Company of Boston		607	13%	704	-4%	684	-54%	20	103%	213	125%	39.49
LHB028	Life Insurance Company of North America		258	-99%	6,659	-87%	-2,047	-103%	9,229	193%	14,497	218%	61.34
LHC025	Manulife - Manufacturers Life Insurance Company (The)	Manulife	35,580,941	48%	78,841,124	106%	72,139,218	123%	6,195,218	17%	5,852,508	-22%	139.62
LHC042	Manulife - Manulife Financial Corporation (See Profile Notes)	Manulife	35,580,942	48%	78,715,363	106%	72,496,227	122%	5,834,619	16%	5,738,561	-18%	129.45
LHC072	Manulife Assurance Company of Canada	Manulife	0		1,744	4%	385	-26%	999	17%	1,683	32%	132.62
LHC026	MD Life Insurance Company		0		22,331	7%	19,331	8%	2,187	-8%	2,187	-8%	169.95
LHB033	Metropolitan Life Insurance Company		0		2,198	-1%	330	-20%	1,095	-23%	1,145	-1%	0
LHB093	Metropolitan Tower Life Insurance Company		280,015	1%	426,603	44%	292,104	16%	134,499	205%	134,499	205%	61.6
LHB035	Munich Reinsurance Company (Life Branch)		1,697,938	9%	2,059,145	23%	1,938,935	45%	95,207	-63%	108,217	-54%	103.47
LHB038	New York Life Insurance Company		47,584	-2%	47,926	-43%	52,883	12%	-4,402	-113%	16,126	-31%	62.78
FLB006	Order of United Commercial Travelers of America (The)		0	-100%	250	-55%	-485	-63%	497	443%	424	105%	0
LHB092	Pacific Life Re Limited		5,778	59%	9,560	91%	15,906	199%	-3,747	-12590%	-3,747	-12590%	97.57
LHB087	Partner Reinsurance Company Ltd.		7,733	-19%	19,041	78%	10,024	90%	7,914	281%	7,914	281%	128.6
LHC069	PartnerRe Life Reinsurance Company of Canada		80,539	61%	107,528	70%	98,465	30%	8,612	167%	8,835	170%	134.06
LHB023	Pavonia Life Insurance Company of Michigan		5,771	-16%	6,906	-10%	4,870	-32%	1,180	139%	1,161	139%	46.89
LHC033	Primerica Life Insurance Company of Canada		175,546	10%	264,708	7%	135,928	34%	93,885	-11%	98,268	-5%	168.32
LHC023	RBC Life Insurance Company	RBC	1,664,003	-9%	3,408,628	75%	3,062,881	90%	256,563	5%	322,908	61%	137.04

Summarized Year-End 2019 Canadian Life/Health/Fraternal Insurance Results

Dollar amounts in thousands of Canadian Dollars.

Released March 23, 2020

For extremely detailed year-end 2019 financial data on these companies please refer to the MSA Researcher Life/Health Software Platform by logging in at www.msaresearch.com

MSA Code	Company	Group	Net Premiums	YoY% Change	Total Revenue	YoY% Change	Benefits and Expenses	YoY% Change	Net Income	YoY% Change	Comprehensive Income	YoY% Change	LICAT or LIMAT Ratio
LHC034	Reliable Life Insurance Company		419	-38%	650	-33%	294	-57%	261	22%	261	22%	160.07
LHB040	ReliaStar Life Insurance Company		0		1,792	-69%	1,731	3229%	61	-99%	1,841	-39%	4.73
LHC021	RGA Life Reinsurance Company of Canada		450,614	32%	1,423,565	223%	1,697,926	233%	-293,300	-497%	-298,826	-569%	117.58
LHB095	SCOR SE		310,148		328,845		415,905		-71,771		-55,018		0
LHC019	Scotia Life Insurance Company		7,165	-86%	26,324	-53%	10,735	-60%	66,742	136%	67,078	178%	2644.24
LHP027	SSQ Insurance Company Inc.		185,615	4%	396,238	118%	352,502	119%	33,133	101%	37,111	198%	
LHC043	Sun Life Financial Inc. (See Profile Note)	Sunlife	20,282,649	9%	39,699,841	47%	36,465,825	55%	2,717,244	4%	2,715,088	-23%	142.95
LHC036	Sunlife - Sun Life Assurance Company of Canada	Sunlife	18,888,209	2%	32,356,447	41%	30,344,400	51%	1,735,779	-15%	1,808,976	-35%	130.36
LHC067	Sunlife - Sun Life Insurance (Canada) Limited	Sunlife	2,657,959	3%	4,096,569	40%	3,749,397	47%	353,151	44%	416,651	89%	134.64
FLB007	Supreme Council of the Royal Arcanum		99	1%	603	-1%	457	56%	134	-56%	134	-56%	33.29
LHB051	Swiss Reinsurance Company (Life Branch)	Swiss Re	105,507	2%	437,039	359%	366,374	644%	81,566	-35%	88,866	-30%	96.93
LHC037	TD Life Insurance Company		79,729	3%	121,843	18%	115,064	18%	4,956	22%	5,565	49%	203.04
FLC014	Teachers Life Insurance Society (Fraternal)		16,921	4%	26,031	56%	23,701	63%	2,330	8%	4,367	171%	
FLC015	Toronto Police Widows and Orphans Fund		1,728	-1%	20,094	9897%	19,401	1229%	469	155%	1,154	179%	175.57
FGC001	Total - Canadian Fraternal		1,092,415	-11%	2,295,631	52%	2,164,578	33%	98,490	187%	75,234	775%	1075.03
GLC001	Total - Federal Canadian Life Companies		97,878,544	19%	176,134,022	64%	163,333,039	73%	11,476,509	3%	11,174,986	-22%	6739.61
GLB001	Total Foreign Branches		3,285,780	21%	4,282,442	43%	3,780,670	47%	442,177	24%	575,999	99%	1753.63
FGB001	Total Foreign Fraternal		209,171	-1%	450,723	45%	571,462	69%	-121,004	-342%	-95,298	-89%	267.99
FLC011	UFSC Heritage Life Insurance Fraternal Society		90	11%	847	484%	924	349%	-77	-26%	-19	69%	230.75
FLB009	Ukrainian National Association		35	-13%	272	-6%	166	-86%	91	110%	91	110%	109.45
LHB053	United American Insurance Company		99	-28%	463	-3%	591	-38%	-73	78%	-338	37%	35.7
LHC039	Wawanesa Life Insurance Company (The)		189,984	-15%	314,487	36%	300,010	37%	3,652	-46%	15,350	109%	177.49
LHC018	Western Life Assurance Company (Ceased 2020)		76,793	-31%	103,072	-6%	108,889	4%	-4,457	-229%	-2,678	-168%	181.37
LHB096	Wilton RE (Canada) Limited		2,154	-76%	7,902	-22%	7,918	35%	-16	-100%	-16	-100%	184.93
	Total Industry		222,080,498	18%	400,011,044	63%	370,646,821	71%	25,952,761	7%	26,061,757	-14%	

Shaded rows indicates that subsidiary information was not taken into account for industry totals to avoid double counting.

For more information on MSA's double counting prevention system (DCPS) please see www.msaresearch.com/msa-researcher-software



2020

PRODUCTS, SERVICES AND EVENTS CATALOGUE



Definitive Insurance Information for Intelligent Business Decisions™

OUR STORY

Market-Security Analysis & Research Inc. (MSA Research) is a Canadian-owned, independent and impartial analytical research firm that is focused on the Canadian insurance industry. MSA Research was founded in 2003 and commenced operations in 2004.

We are the dominant provider of financial information relating to Canadian insurers, with 90% of the Canadian industry using our reports and software. Our mission is to provide Canada's insurance professionals with comprehensive financial information, unparalleled analytics, and opportunities for industry to collaborate on important issues of the day.

MSA Research is the organization behind esteemed conferences such as the National Insurance Conference of Canada (founded 2007), the Canadian Insurance Financial Forum (founded 2010), CatIQ Connect (founded 2014) and InsurTech North (founded 2018). For more information about our conferences, see the back cover of this catalogue.

Through fostering industry thought leadership, MSA Research continues to prove itself a staple provider of valuable Canadian insurance information.

MSA IN NUMBERS



Users

1,100+



Years of Data

30



Market Coverage

98%+



Number of Data Points

117million+



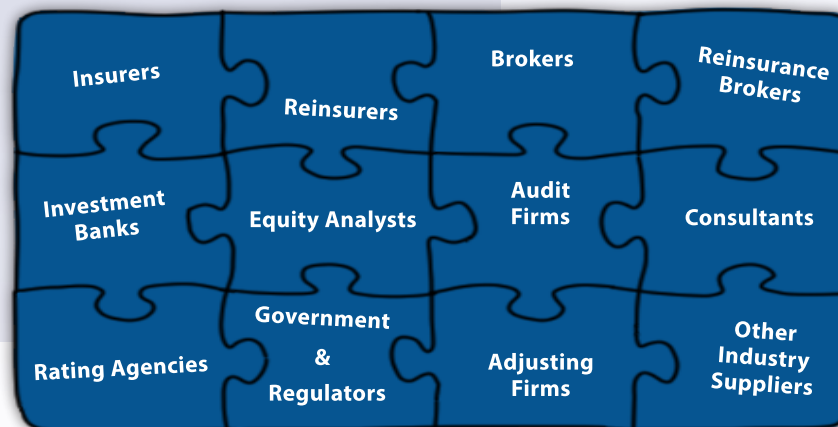
Number of User-generated Data Points

2billion+

OUR CUSTOMERS

90%

of the Canadian insurance industry uses our reports and software!



MSA RESEARCHER P&C AND L/H SOFTWARE

The Industry Gold Standard 🏆

The MSA Researcher Platforms are, by far, the market's leading analytical engine, financial database, business-intelligence and benchmarking tool for anyone interested in the Canadian P&C and Life/Health industries. Our software is used by the overwhelming majority of insurers, reinsurers, and many others that make up the Canadian insurance industry.

 **Unmatched Breadth: Reporting on over 98% of the market with 30+ years of historical data available**

 **Unparalleled Timeliness & Frequency: Updates are released rapidly every quarter**

 **Unrivalled Functionality: Easy access to a spectrum of analytical tools**

 **Uncompromising Support & Training: It's always about your needs and it's always free**

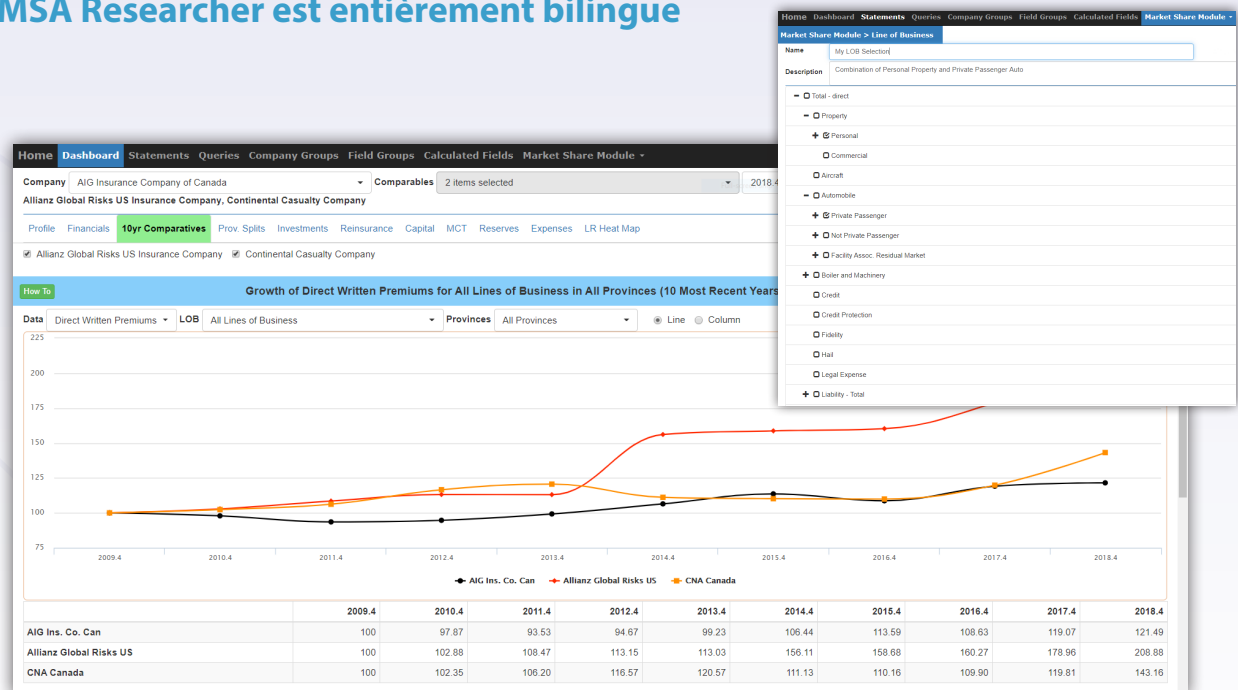
 **MSA Researcher is fully bilingual / MSA Researcher est entièrement bilingue**

Our interactive multi-tab, multi-period and multi-dimensional dashboards provide you with quick and easy access to our analytical tools.

These dashboards are available to:

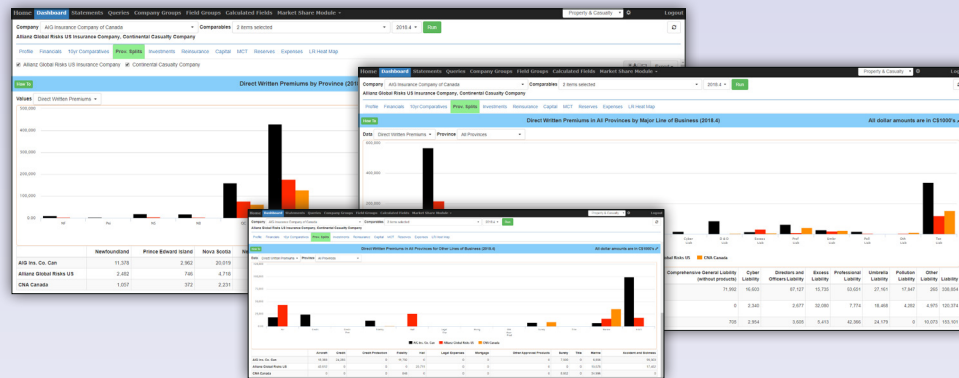
- MSA Researcher Full License
- MSA Researcher Lite License

See next page for full dashboard tabs and some examples.



P&C Dashboard

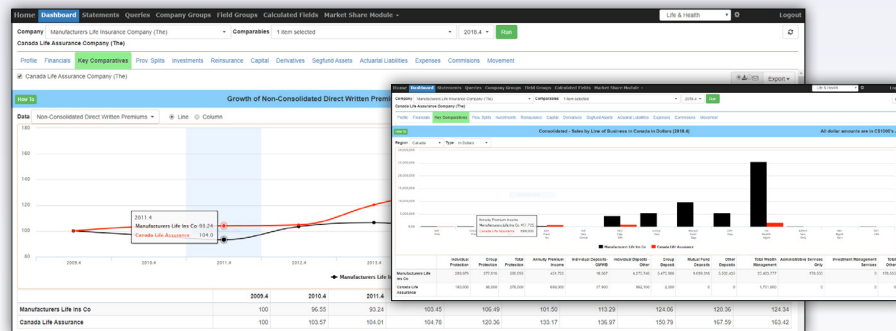
Examples of two out of eleven tabs:



Provincial Splits: Use this three-part tab to quickly analyze and compare provincial split and line of business information for the selected company/ies, benchmarks or composites.

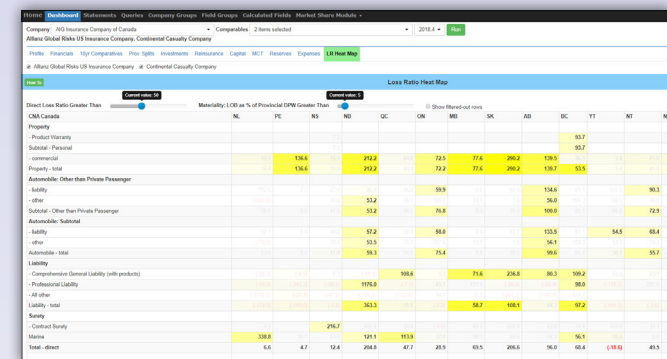
L/H Dashboard

Examples of two out of thirteen tabs:



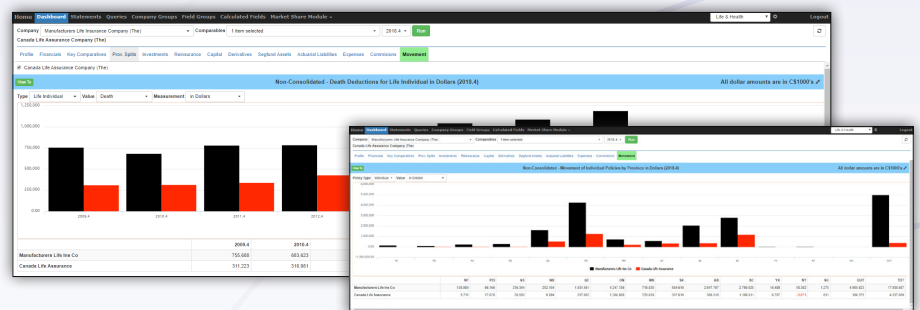
Key Comparatives: With this two-part tab, quickly analyze and compare line of business and geographic information over ten years for the selected company/ies, benchmarks or composites.

Profile Financials 10-year Comparatives Prov Splits Investments
Reinsurance Capital MCT Reserves Expenses Loss Ratio Heat Map



Loss Ratio Heat Map: Use MSA's loss ratio heat map to quickly hone in on pain points for the selected company/ies, benchmarks or composites. Use the handy sliders to adjust loss ratio thresholds and desired line of business materiality.

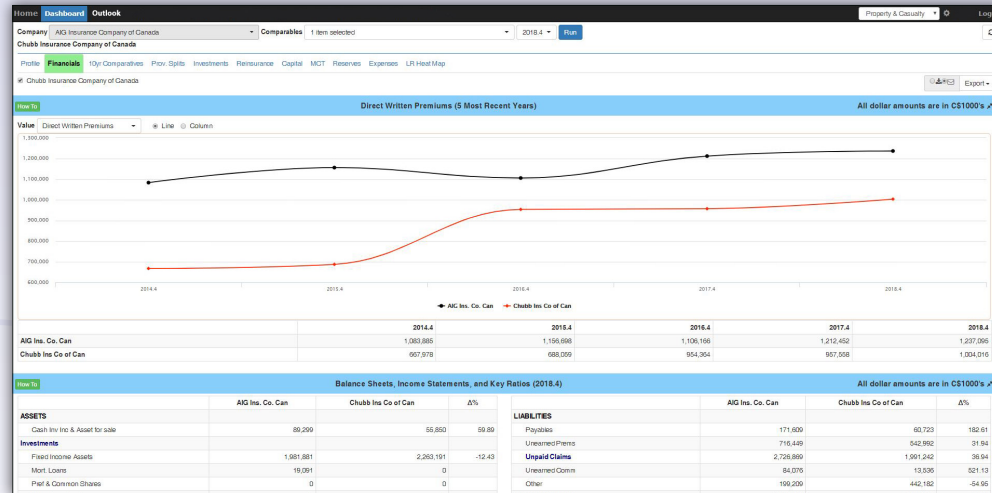
Profile Financials Key Comparatives Prov Splits Investments Reinsurance Capital
Derivatives Seg Fund Assets Actuarial Liabilities General Expenses Commissions Movement



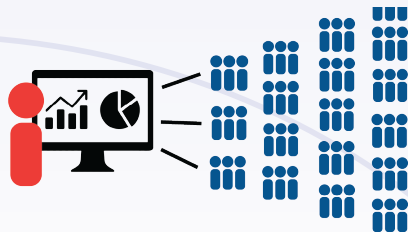
Movement: Use this two-part tab to analyze policy movement by line, by category, by dollars, or by policy count or by province for the selected company/ies, benchmarks or composites.

MSA Researcher *Lite*

Every license of MSA Researcher is accompanied by a companion Lite license for another user that provides access to MSA Researcher's powerful dashboard and MSA Quarterly Report Online (P&C only).



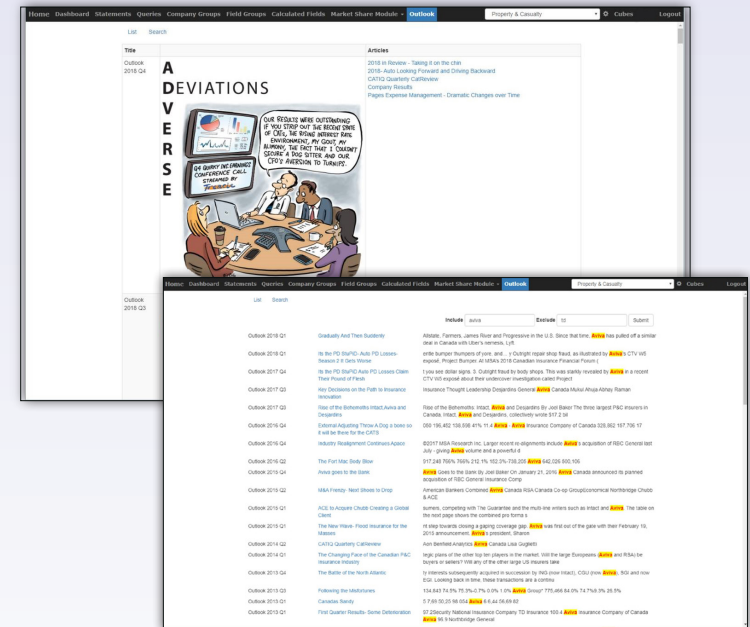
MSA Researcher Unlimited



Site license subscribers of MSA Researcher can now give MSA Researcher Lite to an unlimited number of their staff, executives and board members. P&C users will have access to our Quarterly Report online.

MSA Quarterly Outlook Reports Online

Every license of MSA Researcher P&C has a new module with a searchable archive of MSA's Quarterly Reports going back to Q2-2004. (Available to Full & Lite P&C Licenses)



Statement Viewer

(Not available to Lite licenses)

Browse or export OSFI/CCIR statement pages for any company, benchmark or composite for any period, or export an entire statement. Includes 3-month or rolling 12-month views.

Powerful Engine Query

(Not available to Lite licenses)

Query is where you have the ability to quickly obtain precisely the data that you need. Sort, filter and export it to Excel. Looking to analyze a specific aspect across a group of insurers, benchmarks or composites? Compare against the whole industry? Sort companies by any field in the regulatory statements? Query is where you do that!

Create custom 'Field Groups' and 'Company Groups' and then run them against each other. These groups are persistent. That is, once you create them, you can use them repeatedly. You can also share them with others in your organization if you have a corporate license.

The screenshot shows the 'Statement Viewer' interface. At the top, there's a navigation bar with 'Home', 'Dashboard', 'Statements' (selected), 'Queries', 'Company Groups', 'Field Groups', 'Calculated Fields', and 'Market Share Module'. Below this, a 'How To' section shows 'Company' set to 'AIG Insurance Company of Canada'. The 'Period' is '2018.4' and 'Time Frame' is 'YTD'. The 'Page' is '20.30 Statement of Income'. The main content area displays the 'CONSOLIDATED FINANCIAL STATEMENTS' for '2018.4 (YTD)'. It lists various financial metrics with columns for 'Current Year (01)' and 'Prior Year (03)'. The metrics include Underwriting Operations (Premiums Written, Net Premiums Written, Net Premiums Earned, Total Underwriting Revenue, Net Claims and Adjustment Expenses, Underwriting Income (Loss)), Investment Operations (Income, Gains (Losses) from FVO or FVTPL, Realized Gains (Losses), Expenses), and Net Investment Income.

Page		Current Year (01)	Prior Year (03)
	UNDERWRITING OPERATIONS		
	Premiums Written		
	Direct	1,237,095	1,212,452
70.21	Reinsurance Assumed	15,088	15,116
70.21	Reinsurance Ceded	854,666	831,477
60.20	Net Premiums Written	397,517	396,091
	Decrease (increase) in Net Unearned Premiums	1,281	(6,093)
60.20	Net Premiums Earned	398,798	389,998
	Service Charges	669	829
	Other	0	0
	Total Underwriting Revenue	399,467	390,827
	Gross Claims and Adjustment Expenses	1,024,696	717,450
	Reinsurers' share of claims and adjustment expenses	715,431	402,887
60.20	Net Claims and Adjustment Expenses	309,265	314,763
	Acquisition Expenses		
80.10	Gross Commissions	111,235	105,358
80.10	Ceded Commissions	154,832	152,037
	Taxes	43,247	38,248
80.20	Other	48,403	45,535
80.20	General Expenses	41,596	36,780
	Total Claims and Expenses	398,914	388,647
	Premium Deficiency Adjustments	0	0
	Underwriting Income (Loss)	553	2,180
40.07	INVESTMENT OPERATIONS		
	Income	69,416	67,549
	Gains (Losses) from FVO or FVTPL	(166)	7,166
	Realized Gains (Losses)	(2,817)	14,680
	Expenses	1,664	2,077
	Net Investment Income	64,769	87,318

The screenshot shows the 'Query' interface. At the top, there's a navigation bar with 'Home', 'Dashboard', 'Statements', 'Queries' (selected), 'Company Groups', 'Field Groups', 'Calculated Fields', and 'Market Share Module'. Below this, a 'How To' section shows 'Query' set to 'Multiple Companies and Fields (1 Period)'. The 'Period' is '2019.3'. The 'Run Query' button is highlighted. The main content area displays a table of financial data for various companies. The table has columns for 'Company', 'MSA Code', 'WP_Direct PY', 'WP_Direct CY', 'WP_Assumed PY', 'WP_Assumed CY', 'WP_Ceded PY', 'WP_Ceded CY', 'NPWritten PY', 'NPWritten CY', 'ChngInUPR PY', 'ChngInUPR CY', 'NPEarned PY', 'NPEarned CY', 'SveChrgs PY', 'SveChrgs CY', and 'OtherU CY'. The data is sorted by 'Company' and includes a 'Total SUM' row at the bottom.

Company	MSA Code	WP_Direct PY	WP_Direct CY	WP_Assumed PY	WP_Assumed CY	WP_Ceded PY	WP_Ceded CY	NPWritten PY	NPWritten CY	ChngInUPR PY	ChngInUPR CY	NPEarned PY	NPEarned CY	SveChrgs PY	SveChrgs CY	OtherU CY
AIG Insurance Company of Canada	PCP074	1,026,548	979,247	7,369	10,121	768,908	712,368	265,109	276,980	32,962	21,309	268,071	298,289	753	496	
Algonia Mutual Insurance Company	PCP065	8,079	7,102	0	0	1,425	1,359	6,554	5,743	-650	-54	6,004	5,689	103	92	
Allianz Global Risks US Insurance Company	PCB176	476,561	361,252	39,346	28,482	220,114	176,957	295,793	212,817	-37,606	-6,113	268,187	206,704	0	0	
Allied World Specialty Insurance Company	PCB231	48,953	28,627	120	233	25,159	11,565	23,914	17,266	-9,041	-9,505	14,873	7,790	0	0	
Allstate Insurance Company of Canada	PCC003	1,470,502	1,231,171	0	0	2,317	1,826	1,468,185	1,229,345	-155,105	-93,868	1,313,080	1,135,477	22,305	18,783	
Esurance Insurance Company of Canada	PCP193	70	2,649	0	0	0	0	70	2,649	13	488	63	3,137	0	70	
Palo Alto Insurance Company	PCP111	63,759	51,223	0	0	0	-2	63,759	51,227	-3,291	-548	60,508	50,679	1,671	1,361	
Pennbridge Insurance Company	PCP065	343,023	249,202	0	0	463	273	342,560	248,987	-43,004	-32,808	297,555	216,179	5,248	3,706	
Allstate [Selected 4] - SubTotal		1,470,502	1,231,171	0	0	2,317	1,826	1,468,185	1,229,345	-155,105	-93,868	1,313,080	1,135,477	22,305	18,783	
American Agricultural Insurance Company	PCB013	0	0	14,276	14,190	4,550	4,397	9,726	9,793	64	5	9,790	9,798	0	0	
American Bankers Insurance Company of Florida	PCB018	422,590	421,680	0	0	249,036	250,559	173,551	171,021	5,606	-21,753	179,157	149,268	0	0	
American Road Insurance Company (The)	PCB023	9,547	10,372	0	0	0	0	9,547	10,372	0	0	9,547	10,372	0	0	
Antigonish Farmers' Mutual Insurance Company	PCC006	4,789	4,650	0	0	923	920	3,865	3,730	62	31	3,928	3,761	113	109	
Arch Insurance Canada Ltd.	PCP190	85,561	64,909	300	400	76,868	57,577	9,963	7,732	-2,899	-637	7,124	7,066	0	0	
Arch Reinsurance Company	PCB240	0	0	49,505	36,331	39,971	29,526	9,534	6,705	-2,344	203	7,190	6,508	0	0	
Aspen Insurance UK Limited	PCB121	8,315	4,707	19,325	21,035	19,725	20,548	7,915	5,194	-2,463	-316	5,452	4,878	0	0	
Associated Electric & Gas Insurance Services Limited	PCB224	25,831	22,311	0	0	12,063	9,188	13,768	13,123	-767	-644	13,001	12,476	0	0	
Atradius Crédito y Caución, S.A. de Seguros y Reaseguros	PCB245	10,657	10,828	0	0	6,008	6,602	4,589	4,226	457	84	5,056	4,310	493	291	
Aviva General Insurance Company	PCC038	688,251	744,176	39,116	171,544	609,567	371,474	117,800	544,246	86,418	-9,847	204,218	534,399	0	0	
Aviva Insurance Company of Canada	PCC037	2,563,541	2,504,905	127,717	398,709	2,234,450	792,707	456,898	2,110,907	335,165	-38,192	762,083	2,072,715	0	0	
Elite Insurance Company	PCC030	232,578	235,168	16,927	159,053	195,106	142,895	54,399	251,326	-5,547	94,307	246,779	0	0	0	
Pilot Insurance Company	PCP059	-2	-4	32,466	115,684	7,426	0	25,038	115,680	18,368	-2,053	43,406	113,587	0	0	
S&Y Insurance Company	PCP112	40,062	35,800	913	34,072	31,316	25,245	9,659	44,626	7,086	-807	16,743	43,819	0	0	
Total SUM		45,299,135	41,226,453	6,247,173	6,394,924	14,042,412	10,562,018	37,503,896	37,068,359	-1,704,364	-2,161,065	35,799,532	34,897,294	175,556	173,736	

Powerful Market-Share Analysis Module

(Not available to Lite licenses)

This extremely powerful view provides you with unprecedented insights into market share information. Measure marketshare for any line (or combination of lines) in any province (or any combination of provinces) for any set of companies, composites or benchmarks, against any base (industry or otherwise) over five years. Do in minutes what would otherwise take you hours, then easily export the results to Excel.

- ✓ Line-of-Business Selector
- ✓ Region Selector
- ✓ Market-share Analysis Grid

HomeDashboardStatementsQueriesCompany GroupsField GroupsCalculated FieldsMarket Share Module -

Property & Casualty

Market Share Module > Query

View To

RegionCanada

LOBCommercial Lines

Company GroupMarket share - Group Basis

BaseIndustry TotalCurrent thru 2018

Run

Search

DCPS™ ACTIVATED!

Hide data flagged by DCPS

Enable Group Fine Prints

From1to5

2018.4

Print

Export to Excel

Company	Rank by					Market Share					Direct Written Premiums					% Growth	
	2018.4	2017.4	2016.4	2015.4	2014.4	2018.4	2017.4	2016.4	2015.4	2014.4	2018.4	2017.4	2016.4	2015.4	2014.4		
Lloyds Underwriters	1	1	2	2	2	12.30	11.82	11.17	11.00	9.79	2,979,015	2,660,423	2,426,525	2,337,821	1,946,371	1.12	1.10
Intact Financial Corporation (See Profile Notes)	2	2	1	1	1	11.71	11.76	11.98	12.31	11.99	2,836,313	2,647,307	2,602,167	2,616,969	2,384,280	1.07	1.02
Aviva Canada Group (See Profile Notes)	3	3	3	3	3	7.12	7.61	7.51	7.78	8.21	1,724,588	1,712,695	1,631,072	1,652,599	1,632,472	1.01	1.05
COMP Northbridge Financial Corporation	4	4	4	4	5	5.83	5.63	5.35	4.98	4.92	1,413,273	1,267,891	1,162,814	1,058,347	977,299	1.11	1.09
AIG Insurance Company of Canada	5	5	6	5	7	4.39	4.68	4.40	4.74	4.76	1,063,104	1,054,522	955,660	1,006,980	945,508	1.01	1.10
RSA Canada Group (See Profile Notes)	6	6	5	6	4	4.02	4.11	4.76	4.43	5.03	973,619	925,375	1,034,384	941,837	999,863	1.05	0.89
COMP Co-operators - Group	7	7	8	9	9	3.82	3.83	3.75	3.72	3.85	926,357	862,975	814,552	790,014	765,914	1.07	1.06
Insurance Corporation of British Columbia (See Profile Notes)	8	8	7	11	12	3.61	3.64	4.22	3.17	3.04	874,768	819,919	916,048	674,294	604,958	1.07	1.00
COMP Travelers - Group	9	10	12	10	10	3.05	3.08	3.08	3.15	3.39	739,675	693,169	669,931	669,151	674,041	1.07	1.03
Economical Mutual Insurance Company	9	9	10	8	8	2.94	3.47	3.65	3.70	4.05	712,172	780,399	793,454	785,929	805,152	0.91	0.98
COMP Chubb Group	12	13	14	13	13	2.67	2.75	2.86	1.78	1.82	645,614	619,447	622,217	378,424	361,684	1.04	1.00
Glenworth Financial Mortgage Insurance Company Canada	11	10	8	11	11	2.64	2.94	3.50	3.80	3.21	638,995	662,706	759,806	808,819	637,675	0.96	0.87
Zurich Insurance Company Ltd.	13	13	11	7	6	2.38	2.58	3.30	4.36	4.87	575,959	579,689	716,091	927,648	968,314	0.99	0.81
Wawanesa Mutual Insurance Company (The)	14	14	14	13	14	2.03	1.97	1.93	1.89	1.81	490,803	442,371	418,238	402,073	360,394	1.11	1.06
Alliant Global Risk US Insurance Company	16	17	16	17	18	1.85	1.80	1.50	1.59	1.51	448,675	360,540	325,590	337,191	300,381	1.24	1.11
COMP FM Global - Group	15	15	15	15	17	1.73	1.74	1.67	1.69	1.74	418,979	391,356	363,538	360,169	346,157	1.07	1.08
COMP XL - Group	24	26	62	66	152	1.04	0.87	0.12	0.12	0.12	369,326	233,553	188,564	25,361	23,632	1.58	1.24
SGI CANADA	17	18	18	18	18	1.49	1.51	1.44	1.39	1.38	361,311	340,031	313,364	296,123	273,393	1.06	1.09
Canada Guaranty Mortgage Insurance Company	19	16	19	21	139	1.41	1.54	1.31	1.17	1.17	335,923	318,151	335,496	277,426	233,113	1.06	0.95
Protektor Mutual Insurance Company	21	21	21	21	21	1.25	1.24	1.15	1.15	1.15	324,002	279,054	269,499	269,499	269,499	1.00	0.95
Total						99.35	99.16	99.73	99.68	98.64	24,985,541	22,322,058	21,863,582	20,979,863	19,607,555	1.06	1.03

Collaboration Features

(Available to Corporate licenses)

DCPS™ ACTIVATED!

A Cure for the Double Counting Blues

Query employs MSA's proprietary Double Counting Prevention System (DCPS). DCPS takes care of double counting when you include consolidated parent companies with their subsidiaries in your queries.



SHARE

Easily bulk share/un-share objects such as company groups, composites, field groups and calculated fields with colleagues within your organization. They will be able to use them but not modify them (read-only basis). Users can make their own copies.



TRANSFER

Yield control of selected objects to colleagues and they can work on them (the objects will be shared back with you on a read-only basis).

Automation via MSA's Application Program Interface

Corporate site license subscribers have the option of tapping into MSA's P&C or Life/Health Researcher platforms programmatically via API, allowing for powerful automation of reports or services and deep integration with other corporate reporting systems.

The API allows programatic access to many of the core features of the platform including:

- 01** Individual user ability to share data with the corporate API access account
- 02** The corporate API access account may access all individual users' data simultaneously, including: - Company Groups and Composites - Fields Groups - Calculated Fields - Market Share Lines of Business - Market Share Regions
- 03** All querying features, such as: - Field Query - Period Query - Company Query - Market Share Query
- 04** Regulatory Statement Data
- 05** All DataPoints Data (for open database license holders)



For access to the API, please contact:
tesfaye.fekade@msaresearch.com

MSA Researcher Options & Benefits

For pricing, information or to arrange a demo, please contact Tesfaye Fekade at tesfaye.fekade@msaresearch.com.

	Individual Licenses (P&C)	Corporate Site Licenses (P&C)	Lite (P&C)	Individual Licenses (Life/Health)	Corporate Site Licenses (Life Health)	Lite (Life/Health)
Number of Full Users	1, 2 or 3	25 and up	-	1, 2 or 3	25 and up	-
Number of Lite Users	1, 2 or 3	Unlimited	-	1, 2 or 3	Unlimited	-
Update Frequency	Quarterly	Quarterly	Quarterly	Quarterly	Quarterly	Quarterly
Support	✓	✓	✓	✓	✓	✓
Admin Controls	✗	✓	NA	✗	✓	NA
Collaboration Features	✗	✓	NA	✗	✓	NA
Yrs of Data	10	10 or back to 1990	10	10	10 or back to 1996	10
Online Access to MSA's Quarterly Rpt	✓	✓	✓	NA	NA	NA
Printed copies of MSA Quarterly Rpt	Add-on	30	add-on	NA	NA	NA
API	✗	✓	✗	✗	✓	✗
Interactive Dashboard	✓	✓	✓	✓	✓	✗
Statement View	✓	✓	✗	✓	✓	✗
Query View	✓	✓	✗	✓	✓	✗
Market Share Module	✓	✓	✗	✓	✓	✗
Company Groups and Custom Composites	✓	✓	✗	✓	✓	✗
Field Groups	✓	✓	✗	✓	✓	✗
Calculated Fields	✓	✓	✗	✓	✓	✗

MSA QUARTERLY OUTLOOK REPORT

We produce a quarterly analytical outlook report covering the Canadian P&C industry

Each issue contains insightful, thought-provoking research pieces covering various aspects of the industry. In addition to the articles, each issue also contains updated summary financial results for Canada's insurers, updated DBRS Ratings Roundup and a CatIQ Review...all of which are informative and of great interest!

As a new feature of our MSA Researcher for P&C users, every license has access to a new module with a searchable archive of MSA's Quarterly Reports going back to Q2-2004.

**Purchase the report online at
store.msaresearch.com**

OUR READERS

This report is subscribed to by approximately 1,400 industry professionals including most Canadian insurance/reinsurance executives, commercial brokers, retail brokers, adjusters, regulators, associations, auditors, analysts & TPA's.

**This report is available to all TIC member brokers
courtesy of our generous sponsor:**

LLOYD'S

Interested in sponsoring these reports to other broker associations or industry groups?
Please contact us at: msaquarterly@msaresearch.com or call (416) 368-0777 x25.



CUSTOM REPORTS, CONSULTING & TRAINING

Custom Reports: Looking for custom data-feeds or reports on industry subsets? Consider ordering a custom report from MSA Research. With access to an extensive database of industry information, we can satisfy the majority of requests. In addition to the year-end numbers available in our standard product offerings, MSA Research has access to extensive quarterly financials on federal P&C companies going back to 1996.

Advisory Services: With our in-depth industry knowledge, our advisory services provide clients with insights into industry entry/exit opportunities, books of business or available shells. Our offerings include extensive analytical research and due-diligence capabilities. MSA Research and its partners provide years of deal-making experience in the Canadian marketplace.

Rating Agency Advisory Services: The ability to effectively manage your rating relationships is key to maximizing your success. We have the experience and knowledge to provide Canadian insurers with insights into what the various rating agencies expect, what they are looking for and how to best address outstanding or potential rating issues. In addition, our experience can give clients a heads-up preview of what ratings they are likely to garner should they engage a rating agency.

Training: We offer uncompromising support and free training to our customers on all our software and products! To book an appointment for onsite or web-based demos, contact: Tes Fekade at (416) 368-0777 x23 or tesfaye.fekade@msaresearch.com



Laura Twidle
Managing Director
(416) 368-0777 x. 30
Email: laura.twidle@catiq.com
www.catiq.com

Catastrophe Indices and Quantification Inc. (CatIQ) delivers detailed analytical and meteorological information on Canadian natural and man-made catastrophes.

Through its online subscription-based application, CatIQ combines comprehensive insured loss and exposure indices, as well as other related information, to better serve the needs of the insurance / reinsurance industries, public sector and other stakeholders.

For more information, visit: WWW.CATIQ.COM

CONFERENCES & EVENTS

Sept. 30-Oct 2, 2020

**The Westin,
Ottawa, ON**

Now in its 14th year, the NICC is the P&C event of the year. This high level conference addresses the most diverse and complex issues leaders face in the property and casualty insurance sector.
niccanada.com



**NATIONAL INSURANCE
CONFERENCE OF CANADA**

**Oct.19-20, 2020
Metro Toronto
Convention Centre**

Canada's preeminent insurance financial forum is back...bigger, better and ready to tackle the industry's thorniest financial issues! It will also include MSA & CatIQ Technical Software Training.
ciff.msaresearch.com



**Nov. 9-10, 2020
Beanfield Centre
Toronto**

InsurTech North is the leading gathering of P&C and Life/Health Insurtechs, Incumbents, VCs, Accelerators and Policymakers. Don't miss it!
insurtechnorth.com



**Feb. 2-3, 2021
Metro Toronto
Convention Centre**

CatIQ Connect features content-driven discussions working to foster collaboration before, during and after catastrophic events.
connect.catiq.com



120 Adelaide Street W. Suite 1420, Toronto, ON, M5H 1T1
Telephone: (416) 368-0777
Email: info@msaresearch.com
www.msaresearch.com